

**Milwaukee
Astronomical
Society**

18850 Observatory Rd
New Berlin, WI
Phone: 262-542-9071

Inside this issue:

Messier Marathon	1
Note From the President	1
Meet the Board / Keyholders	2
Save The Date	2
Volunteers Needed	2
February Meeting	2
2010 Public Observing Schedule / Map	3
Epsilon Aurige Update	4/5
Just For Kids	6
Sheboygan Swap and Sell	6
Ottawa Lake Telescope Clinic	6



Messier Marathon

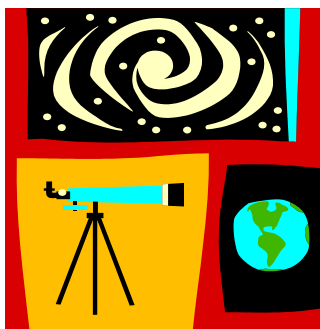
If you are interested in getting out of the house and seeing the stars (Mars, Saturn, galaxies and nebulas), feel free to join me at the Milwaukee Astronomical Society Messier Marathon March 12th. On this night some club members will be trying to track down as many deep sky objects as possible. Others, like me, will be out for a good night of observing.

The location is in the southern unit of Kettle Moraine State Park. It is a wonderful lake side location. If the sky is clear, I plan to be there. Feel free to join me. Here are the details: MAS Messier Marathon Friday, March 12, 2010 Ottawa Lake Recreational Area, part of the Kettle Moraine

Southern Unit.

The park is 6 miles south of Dousman

Notes: If you do not have an annual state park sticker, you will need to purchase a day pass at the park entrance. The fee is \$7.00.



I expect to be onsite, along with other members before sunset to setup.

You do not need to bring a telescope to observe. You can share mine. Other members will be glad to share theirs as well.

After entering the park, turn left and follow the road to the parking lot with the boat launch. We will set up in this parking lot. You are welcome to stay as long as you wish, even all night.

Messier Marathon directions:
FROM MILWAUKEE
- I-94 West to STH 67
- STH 67 South (Left) to CTH ZZ
- STH ZZ West (Right) 200 yards

Any questions, please call me. Clear skies, Jill

Jill Roberts is a member of the MAS Board of Directors. She also serves as the club's librarian. Jill can be reached at 414-587-9422 or via email at jkrjkp@yahoo.com

A Note From the President

We had probably the best attended January meeting in recent memory. The planetarium was filled with people who showed up for the telescope clinic due to the wonderful publicity provided by Vince Condella's mention on Wednesday

during his weather report. Many understood that a telescope clinic is someplace you bring your telescope so the members had a wonderful time introducing the owners to their scopes.

Continued on page 7



Save The Date

Feb. 19th

Board Meeting
General Meeting

March 12th

Messier Marathon

March 19th

Board Meeting
General Meeting

March 27th

Sheboygan Astro-
nomical Society
Swap 'N' Sell

April 16th

Board Meeting
General Meeting

June 12th

Ottawa Lake Tele-
scope Clinic

Save the third Fri-
day night of every
month for the
meetings.

We're on the web:

<http://www.milwaukeeastro.org>

At Your Service

Officers / Staff

President	Neil Simmons	262-889-2039
Vice President	Tim Burrus	262-369-1022
Secretary	Henry Gemer	414-774-9194
Treasurer	Dan Yanko	262-255-3482
Observatory Director	Gerry Samolyk	414-529-9051
Asst. Observatory Director	Henry Gemer	414-774-9194
Editor	Merri Tangney	941-961-4932

Board of Directors

Tim Burrus	262-369-1022
Russell Chabot	414-559-3502
Henry Gemer	414-774-9194
Al Hovey	262-524-5510
Kip Hoffman	920-980-0670
Jill Roberts	414-587-9422
Gerry Samolyk	414-529-9051
Lana Silke	262-966-4929
Neil Simmons	262-889-2039
Virgil Tangney	941-961-4932
Dan Yanko	262-255-3482

Key Holders

2/20/10	Neil Simmons	262-899-2039
2/27/10	Dan Yanko	262-255-3482
3/6/10	Tim Burrus	262-369-1022
3/13/10	Steve Diessos	262-641-0331
3/20/10	Carlos Gasrces	262-786-2623

Keep for your convenience

Volunteers Needed

The Milwaukee Astronomical Society Officers and Board of Directors held a meeting on October 23, 2009. We discussed in detail the open positions that need to be filled in the Milwaukee Astronomical Society. We are hoping to get some input from the membership body and also get some volunteers to help with the open positions. The jobs are not difficult at all and it gives a member a chance

to help make the Milwaukee Astronomical Society a better Astronomy Club. You will have a chance to participate in the club business end of things.

By volunteering you will also get to know many more members of the MAS. This will help you to grow bonding friendships, learn more about the MAS as well as improve your Astronomy skills.

Continued on Page 7

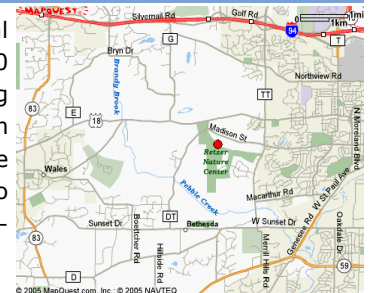
Remember...

" Ask not what the Milwaukee Astronomical Society can do for you, but what you can do for The Milwaukee Astronomical Society".

February Board Meeting / Planetarium Show

The next Board meeting is scheduled for 7:00 PM on February 19th, 2009 at the new **Charles Z. Horowitz Planetarium Center**, S14 W28167 Madison Street in

Waukesha. The general meeting will follow at 8:00 PM. The February meeting will feature a planetarium show This meeting is free and open to the public, so bring your friends and family.



© 2005 MapQuest.com, Inc. © 2005 NAVTEQ

The Milwaukee Astronomical Society

2010 PUBLIC OBSERVING SCHEDULE

DATE	SUBJECT	DESCRIPTION
April 9	Mercury	Elusive Mercury climbs high away from the sun
April 23	Lyrid Meteor Shower	A spring-time meteor shower
May 7	Saturn	The rings are widening since winter's edge on appearance
June 18	Sun	Early show: 6 PM. Watch sunspots through safe, special filters
August 13	Perseid Meteor Shower	A late summer favorite. Learn the constellations while watching for meteors
September 17	Telescope Clinic	Bring your telescopes
October 1	TBA	
October 15	Moon	The moon is at 1st quarter



By: Gerry Samolyk, Milwaukee Astronomical Society

The MAS Observatory is conveniently located in New Berlin Wisconsin.

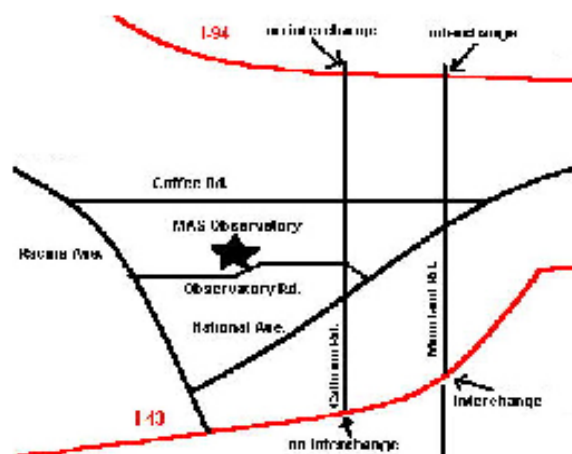
Directions

- Take National Ave. westbound to Observatory Rd. then west again on Observatory Rd.
- Or take I-94 to Moorland Rd, go south to National Ave. and west on Observatory Rd. There is no interchange at I-94 and Calhoun Rd.
- Or take I-43 to Moorland Rd, go north to National Ave. and west on Observatory Rd. There is no interchange at I-94 and Calhoun Rd.
- Or take Racine Rd east from Waukesha to Observatory Rd. and then eastbound on Observatory Rd.

Join us for an Evening Under the Stars!

\$2.00 per person or \$5.00 per Car Load

All Public Observing sessions begin at 7:30 PM except for June 18 which begins at 6:00 PM. A 20-minute presentation about our topic will be given. Club members will be available to answer your questions and be your guide to the Universe.



18850 Observatory Rd., New Berlin, WI 53146

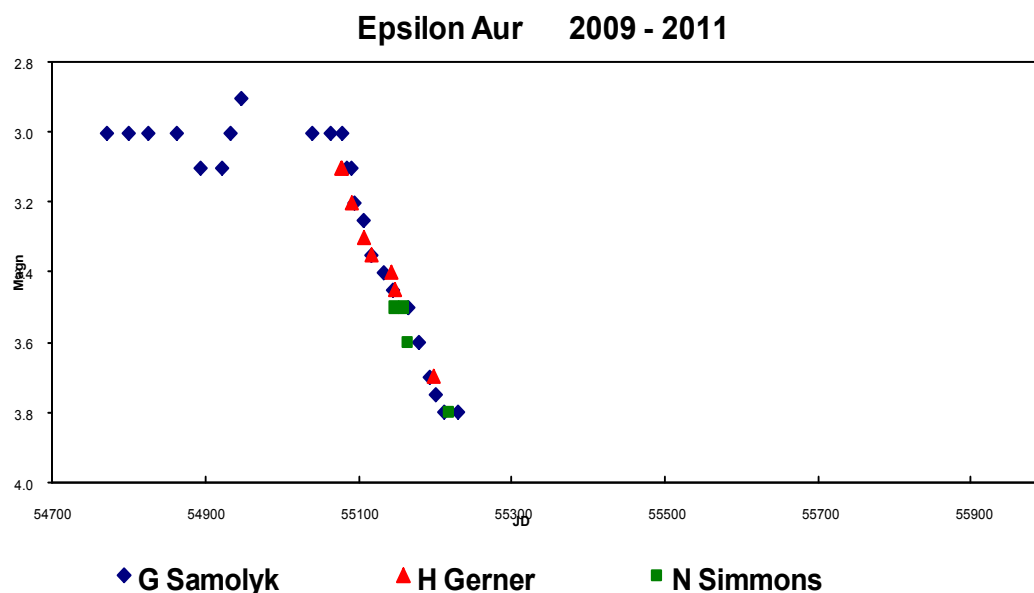
For more information, visit us on the web at: www.milwaukeeastro.org

Epsilon Aurige Update

By: Gerry Samolyk

Last September I gave a program on the upcoming eclipse of Epsilon Aur. As you may recall, this is an F giant star being orbited by a mysterious object. According to current models, we believe that this object is a large, edge on disk with a hole in the center. In the center of the hole there may be a star, binary star, or a star with one or more planets. There are many unknowns about the system.

Once every 27 years, the disk transits across the face of the F star. This eclipse drops the total brightness of the system by 50%. Detailed observations can help define the structure of the disk and primary star. A few MAS members have been observing this event. Our visual lightcurve is shown below. Since this is a bright star, these observations were made with the un-aided eye or low power binoculars. The star is very easy to find.

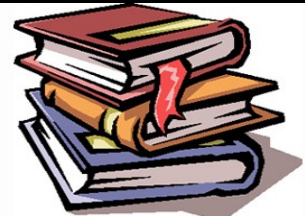


The beginning of the eclipse is clearly visible when the brightness abruptly started to drop. This indicates when the disk first started to cover the star. It took about four months for the leading edge of the disk to cross the star. At that time, the brightness leveled off. We expect this constant phase of the eclipse to last over a year but we want to watch for a mid eclipse brightening expected this summer when the central hole passes over the star. Since mid-eclipse occurs in summer, observations made in July, just before dawn, will be of particular value.

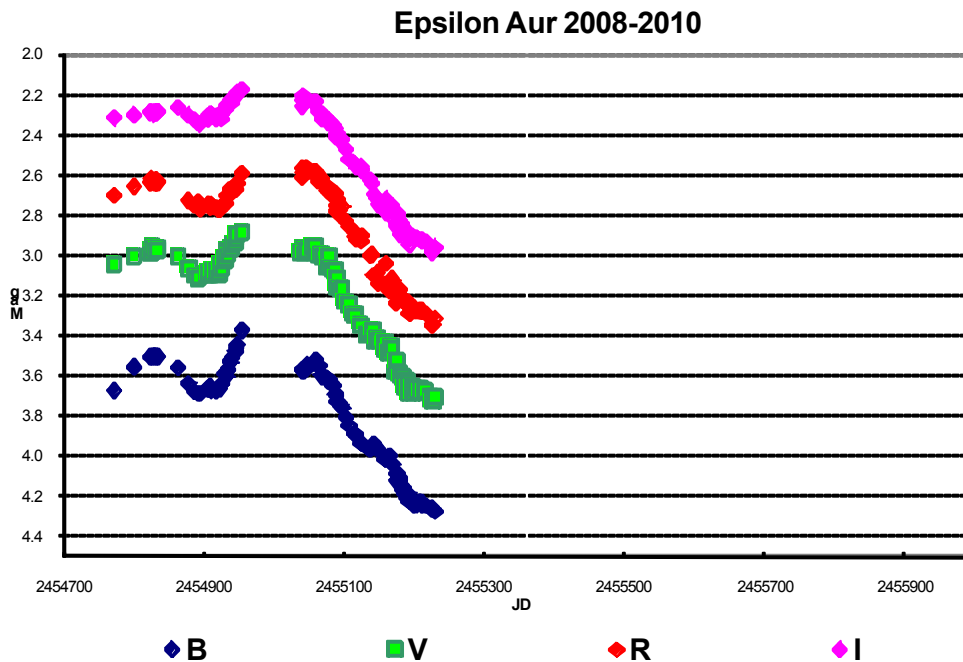
Articles



Articles



The plot below shows my CCD observations taken thru four filters (Blue, Visual, Red, and Infrared). The variations seen before the beginning of the eclipse are caused by pulsations in the F star. This star is close to the instability strip on the HR diagram. It is interesting to see how many features in the CCD lightcurve are also seen in the visual lightcurve.

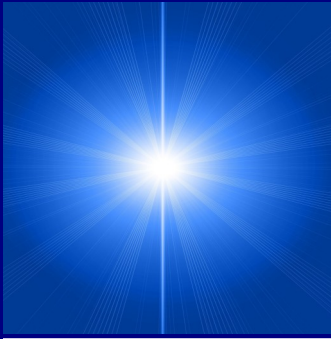


As I mentioned last Sept, the objective of the Citizen Sky Project was to use this eclipse as an educational tool for students. We now have over 1300 participants in this project. Most of these people are high school and college teachers. At a workshop in Chicago last summer, instruction in observing techniques was given. Many of these teachers had little background in astronomy but were very enthusiastic about the project. The participants were interested in visual, Digital SLR, and CCD observations. If each of these teachers can work with a couple of dozen students, we could reach a quarter million people with this project.

More information about observing this eclipse and a link to the Citizen Sky Project can be found on the MAS website on the special projects page or at the project website: <http://www.citizensky.org/>. Epsilon Aur is now well placed in the evening sky.

Editor's Note: Gerry Samolyk has been a member of the Milwaukee Astronomical Society since 1971. He is a Founding Member and is currently serving as Observatory Director and is on the Board of Directors.

“The heavens
 declare the glory of
 God; and the
 firmament sheweth
 his handiwork.”
 Psalm 19:1



Mercury is visible in the morning twilight. **Venus** is visible in evening twilight, late in the month. **Mars** crosses the meridian at 11p.m., and sets at 6 a.m. **Jupiter** can be seen in the evening twilight early in the month. **Saturn** rises at 8 p.m., and crosses the meridian at 3 a.m. (These times are local time for an observer at 40° north latitude at mid-month)

Just For Kids

There are many people in history that helped us understand astronomy better. Way back in the year 1510, a man named Nicolas (Nik oh las) Copernicus (koh pur' nih kus) had the unusual and amazing idea that the earth revolved around the sun. At that time, everyone thought that all the stars and planets revolved around the earth. We know that Copernicus was correct, even though most people during his time

did not believe him.

There are nine planets that we know of in our solar system: Mercury, Venus, Earth, Mars, Jupiter, Saturn, Uranus and Pluto, (although in 2006 Pluto was reclassified as a dwarf planet by the IAU.) This is also the order in which they travel around the sun.

Many people remember the planets and their or-

der around the sun by making a mnemonic (nih mahn' ik) phrase. In a mnemonic phrase the first letter of each planet is made into a different word that makes a sentence. Look at the example on page 7. This is a silly sentence but it will help you to remember the order of the planets. Try making your own mnemonic
 Continued on Page 7

Sheboygan Swap and Sell

Now is the time to mark your calendars and spread the word about the Sheboygan Astronomical Society's Third Annual Swap-N-Sell event. Check out your basements and closets to see if you have any unused Astronomical Equipment that you could sell or swap with

other amateur astronomers.

This is a great opportunity to meet fellow amateur astronomers. See you there, March 27, 2010 at the Aviation Heritage Center from 10:00AM to 3:00PM at the Sheboygan Airport. Terms: Cash, check or

swap. Food will be available.



Ottawa Lake Telescope Clinic

The Milwaukee Astronomical Society is hosting another Telescope Clinic for the campers and the public at Ottawa campground. We will set up just south of the beach. Feel free to invite your family and friends.

If you want, bring food and drinks to grill out at the park or just some sandwiches for your family. I will be there by 5:00 pm. We

will begin the program at 7:00 pm.

We will help people set-up their telescopes, show them how to use it and have a laser show. You can stay as long as you wish.

I look forward to seeing some new members enjoy this opportunity to get familiar with their scope. If you don't have a telescope, there

are others to share. Also, binoculars are also very useful. Bring a chair for yourself.

Any questions call Jill Roberts at (414) 587-9422 or email her at jkrjkgp@yahoo.com

Jill is a member of the MAS Board of Directors and serves as the Club's librarian.

President's Note

Continued from Page 1

Here is a neat photo of Gerry who did a wonderful job talking to this young man about his scope.



The picture on page one shows an unidentified participant trying out a Galileo Scope that the planetarium sells for just \$20.

Meeting at the planetarium during the winter months is wonderful. During the main meeting Planetarium Director Dave Deremer provided a quick "what's up in the sky tonight" for all of us and to show our appreciation of his generosity the MAS has bestowed an honorary membership on Dave Deremer to the applause of all in the room.

Volunteers Wanted

Continued from page 2

I would really like two more members to be on my Committee to help discuss the future of the Observatory. We would work directly with Gerry Samolyk the Observatory Director and the MAS Board on many needed projects.

Please email me at danheleny@aol.com if you are interested in becoming a member of my Observatory Team.

Additional positions available include:

- Membership Chairperson
- Board Member
- Program Planning Chairperson

Think about how you can help the Public Outreach and the Milwaukee Astronomical Society by volunteering for one of the open positions. Remember... "Ask not what the

Milwaukee Astronomical Society can do for you, but what you can do for The Milwaukee Astronomical Society".

Dan Yanko is a Member of the MAS Board of Directors and is currently serving as both Treasurer and Observatory Chairperson.

Just For Kids

Continued from page 6

phrase and send it to me at merri@future-hope.net and I will publish it in next month's issue of Focal Point.

Mercury	Venus	Earth	Mars	Jupiter	Saturn	Uranus	Neptune	Pluto
My	very	early	morning	just	started	under	Nancy's	pancakes

The Milwaukee Astronomical Society
18850 Observatory Road
New Berlin, WI 53151

