



If your so inclined.....

The last year and a half have seen some significant changes in the MAS observatory and these changes are pumping new life into what some had assumed was a declining facility...not true at all! Basic things like: re-aluminizing A, B, Z, observatory mirrors and ten portscope mirrors; digitizing the 25 inch cassegrain in Z to the point where you can "point" to an object on a computer screen,click, and watch the telescope swing to the proper coordinates; reworking the mirror support system on Z; reworking and maintaining A scope drive system and its related dome drive; a badly needed paint up of B scope and the interior walls; both A and B scopes are still slated to have digital readouts of RA and Dec.

Creeping (over the years) light pollution has made film type photos of deep space objects more difficult. Tracking for long periods of time was difficult enough. Now the sky glow limits the length of exposure before the photo starts to wash out. The addition of the ST6 CCD imager circumvents the light pollution by providing much faster exposures of deep space objects and a capability to subtract out the background glow. It also provides a quantitative measure of comparative brightness between stars,.... so useful in studying variable stars.

Now a second CCD imager is on order to help keep the fixed observatories working at high efficiency.

Also not true, is the rumor that the site is not useful for visual astronomy. Hundreds of visual telescope observations of VSO's are made each year. Its also commonplace to find

members out there learning the night skies, working on there Messier certificates,etc..The MAS board is so convinced of the site usefulness that it is revamping the sliding "C" shed into a 12 ft square shed (see Photos, page 3) with a sliding roof. The new C shed will contain a 10 inch F5.6 Newtonian complete with a clock driven, polar aligned mount. The "C" scope will

Continued on page 2, Col. 1

Annual MAS Holiday Get-Together

is Friday, December 10th at Giuseppe's Restaurant starting at 6:30 PM. The game plan is a little different this year in that we will have assorted Pizzas (including a vegetarian variety for the diet conscious) plus ample servings of beer and soda.....all this for a nominal charge of \$11.00 per person. These holiday gatherings have been picking up in attendance in recent years and its just a nice time to renew acquaintances and share some Gemichlekeit.

Giuseppe's On HWY100 is located on the northeast corner of Highway 100 and Bluemound Ave. Its very easy to spot with its assorted Flags flying above the place. Coming from west of the city. take I94, exit on Hwy 100 and proceed north to Bluemound. From the east, take I94 to Hwy 45 north and take first exit (Bluemound), then proceed west to Hwy100. North or south traffic can us 895/45, exit on Bluemound, then to Hwy 100.

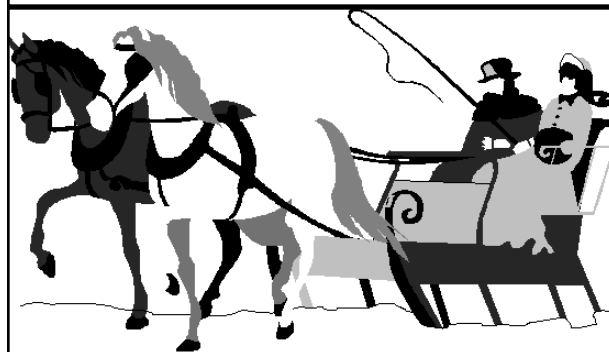
Please do join us to renew old acquaintances and catch up on what's new.

Lastly, a brief board meeting will be held ,during a break in the activities ,to take care of any immediate business.

Neither Wind nor Rain nor.....!

Apologies to all for the late or non existent delivery of the November issue of the Focal Point. The issues were posted on the morning of Nov. 5th and started appearing in a lot of the local mailboxes around the 23rd or later.Prior to this, the bulk rate mailings never had exceeded 7 calendar days to delivery. Perhaps the Postal Services Y2K problems are starting in early!

**Seasons Greetings
from the
Milwaukee Astronomical Society**



New Members

A warm welcome to new members:

- Jerome Robideau Greendale, WI**
- Tony Vicenzi, Brown Deer, WI**

If you can join us at the above gathering, please do so and make your presence known to one of the officers....otherwise, try the next regular meeting. Your on the newsletter mail list so watch for other activities as well.

If your so inclined.....cont'd from Page 1

be available for use at any time by any member willing to pay \$5 for a Yard key and get very minimal training on C scope operation.

Additionally, three 4'x4' cement pads (see page 3) are being added as a more stable base for members who bring their own portable scopes or use the club's portascopes. Lastly the stoop at the entry of the Zemlock building is being recemented so that Weisen Scope (18 inch Obsession scope) will be easy to roll straight out the door and down a ramped lawn. This last set of improvements are all pointed at facilitating visual observing from our hilltop site and for all members to have ready access.

One of the tenets of the clubs By-laws, is to provide facilities and training to enhance member observing skills and participation in all facets of amateur astronomy. All of the above listed rework and additions are being provided to help accomplish that goal. The improved observatory site is a golden opportunity for all of us. **If you've got the inclination, the club is providing the means!**

Invitation to a Starry Night

As some members already know, Joan and I are planning a major star party, called Starry Night (#4 or 5), in Westfield, near our summer house, on April 7, 2000. The skies will be full: Jupiter, Mars, Saturn, Orion, the Pleiades, and a crescent moon. We need volunteers to give lectures, provide scopes and sky tours, and so forth. A few topics seem built in, like those above, but consider also constellations, impact, contact, etc. We have done trial runs at the excellent pub, The Wild Goose. A few phone calls drew some 35 people, hence it seems probable that serious publicity will attract several hundred. The owner of the Goose even turned out lights in the parking lot. His support is plain as is that of two other area business people, and, best of all, the president of the Chamber of Commerce (who, after a single evening with our scope, can't wait to get his own). We want to use the county fairgrounds, where there is parking, power, buildings, etc. Westfield is 2 hours away, an hour north of Portage, an hour south of Steven's Point.

Tom and Joan Pelnar
262-782-6226
e-mail: rumples@execpc.com
fax: 262-782-8116

Editors note:

The above article is being run again, by request, because of uncertainty in delivery of the November issue.

Board Doings

The following items were acted on at the November meeting.

*James Robideau and Tony Vicenzi were accepted for membership

*The Board approved switching the Focal Point to a BI-monthly (every two months) newsletter starting in January.

*A work party was Scheduled to work on "C" shed renovation on Saturday Nov.27th.

Forthcoming Observing Events

Lunar Graze, southern limit, by HIP104863, an 8.4 mag. star on Dec. 12, 1930 CST (Dec.13, 0130 UT).

Altitude is 10 deg. Azimuth 235 Cusp angle 4.7 dark side Assemble at Dalman Rd. and County "I" (See Directions). Assemble at 1830 local time.

Directions: Take I94 to the Lake Mills exit at Highway 89, mile marker 259. Go north on hwy 89 to the village of Waterloo. You can stay on 89 through Waterloo. North of the village the highway takes a sharp left. Cty T goes straight ahead, Dalman Rd goes to the right (east). Take Dalman east until it intersects with Cty I. Or you can pick up on highway 19 where it intersects with 89. Take 19 east (actually northeast) to Portland. Take Cty I (= Portland Rd) north until it intersects with Dalman Rd.

For go/no go call Bob Manske at (608) 849-5287 or Gerry Samolyk at (414) 529-9051 before 2:00 PM on Sunday.

UT	Local times
Dec 10 2340 to 2346	Dec 10 1740 to 1746 Friday

Asteroid #63 Ausonia vs TAC +5799 00101

Asteroid mag 12.30

Star mag 10.00 visual

RA 5h 37m 57.238s Dec -13 27' 12.58"

Delta mag 2.4, Max. duration 3.3 seconds

Moon 31 degrees away, 8% illuminated

Predicted path runs from Brownsville TX to Washington DC. Madison is .5 arcsec north of the path.

UT	Local times
Dec 12 0533 to 0545	Dec 11 2333 to 2345

Asteroid #2920 Automedon vs TAC +10 00879

This is a Jupiter Trojan. A nice target for CCD's

Asteroid mag 15.57

Star mag 10.54 visual

RA 5h 12m 20.809s Dec +10 26' 18.99"

Delta mag 5.0, Max. duration 6.9 seconds

Moon 130 degrees away, 16% illuminated

Predicted path runs from New York City to Nashville to Baja. Madison is .25 arcsec north of the path.

Eds. note: The above two asteroid occultations are not that far off the the predicted path in Milwaukee either. Again, for more information contact Bob or Gerry at the above phone numbers.

Loaner Telescopes (available to members for local use)

Scott Jamieson (Waukesha)	896-0119	4"	f / 1.5 refractor
---------------------------	----------	----	-------------------

Lee Keith (Franklin)	425-2331	8"	Dob reflector
----------------------	----------	----	---------------

Rich Sterle (Greenfield)	543-7479	8"	Dob reflector
--------------------------	----------	----	---------------

Eds. Note:

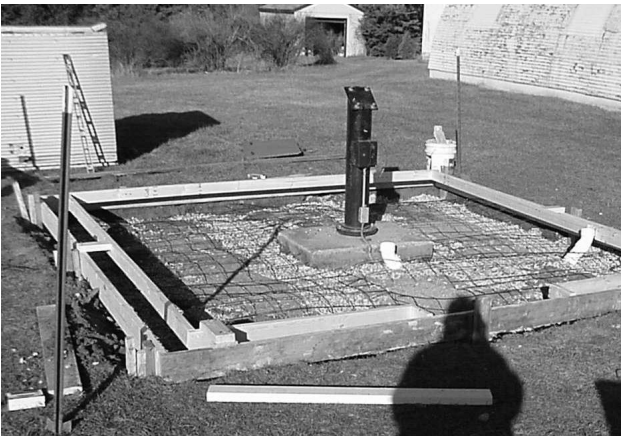
If you can't make it out to the observatory very often and you don't own a scope, the above loaners might be another way to start exploring the night skies.



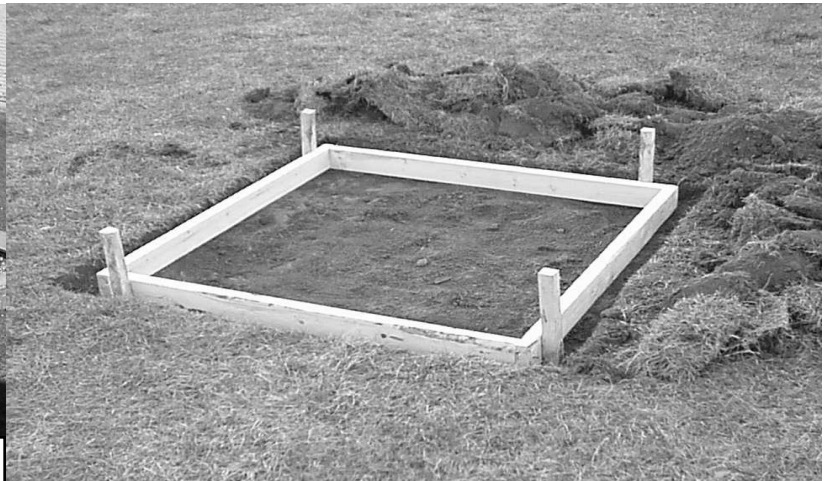
Breaking up the old circular C shed cement Pad



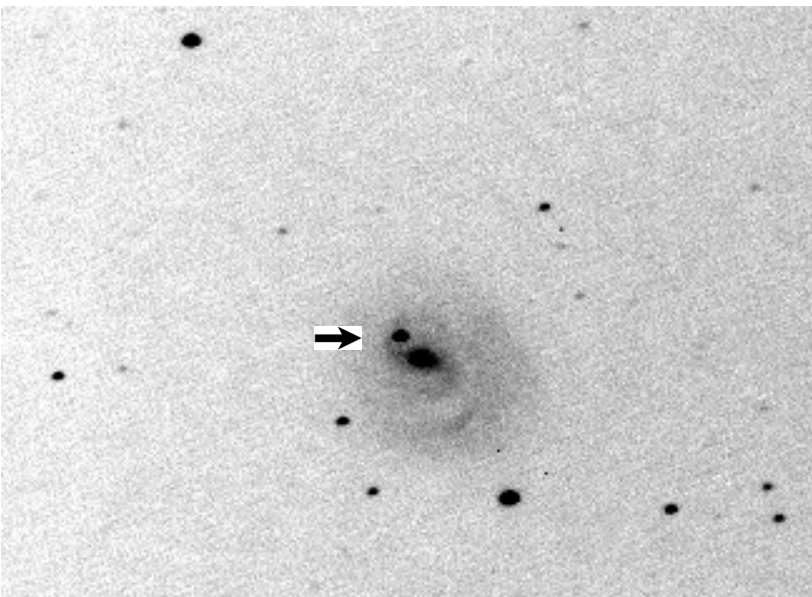
Trenching in the footers for the new 12 x 12 square pad



C shed pad framed and ready for the cement pour



4' x 4' cement pad framed for pouring. There will be three pads



CCD (with the clubs ST6) Image of Supernova (see arrow) in spiral Galaxy NGC 1637 by Scott Jamieson . This Supernova was detected in early November.



ST6 CCD image taken by Gerry Samolyk using eyepiece projection at 0.01 sec.

MAS Officers/ Staff

President	Scott Jamieson	896-0119
Vice President	Lee Keith	425-2331
Treasurer	Dan Yanko	453-3382
Secretary	Margaret Warner	327-7427
Observatory Director	Gerry Samolyk	529-9051
Assistant Observatory Director	Paul Borchardt	781-0169
Focal Point	Rudy Poklar, Editor	786-8931

Future MAS Events

MAS Holiday Get-together , Dec. 10, 6:30 PM, at Giuseppi's Restaurant on Highway 100 & Bluemound Ave.. Get together in lieu of regular monthly meeting.

MAS Membership is open to all with an interest in Astronomy and expanding their knowledge of the Universe. Yearly Membership Dues are: Individual \$28/yr.; Family \$32; Non-resident (individual \$18, Family \$22); Student (under 18) \$12. **For more information, contact Membership Chairperson Julie Frey, 11040 W. Meinecke Avenue, Milwaukee WI.**

Focal Point Publishing Guidelines

Focal Point Newsletter is published monthly from Sept through May with a Mid-summer issue in July. Articles, Announcements, Graphics, Photos, Swap/Sale Ads etc. should be submitted at least 10 days prior to the first of the month (of the desired issue). Article inputs are preferred via E-Mail, or diskette in a text or Word compatible format, if possible. Submit FP inputs to:

MAS Focal Point c/o Rudy Poklar
12905 W. Crawford Drive

Saturday Keyholders

December

4	Dan Yanko	453-3382
11	Wanda Berner	646-8229
18	Paul Borchardt	781-0169
25	Gerry Samolyk	529-9051

January

1	Tim Burrus	783-6572
8	Brian Ganiere	961-8745
15	Bryan Garness	538-3888
22	Chris Hesseltine	482-4515
29	Vern Hoag	548-9130

** If members want to be assured of observatory access on a given Saturday nite, they should call the keyholder ahead of time.*

PLEASE NOTE: The above keyholder list reflects additions and deletions to previous lists. Please discard any prior list.

MAS Observatory 542-9071

The Milwaukee Astronomical Society

2933 N.68th Street
Milwaukee, WI. 53210-1208

CHANGE SERVICE REQUESTED

Non-Profit Org.
U.S. Postage
PAID
Permit # 4775
Milwaukee, WI.

****MAS Holiday Get-together at Giuseppi's Friday, Dec.10th at 6:30 PM***



